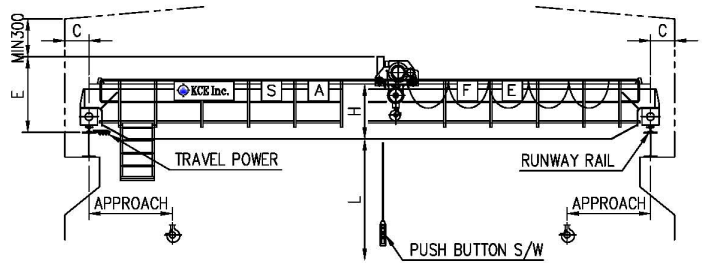
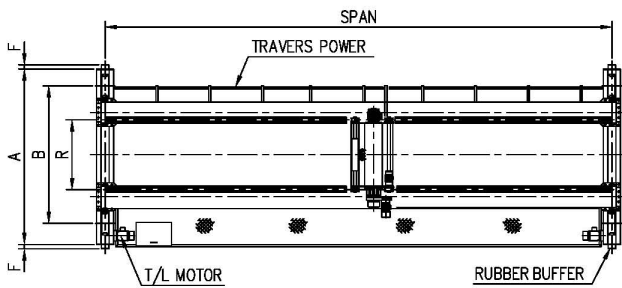


Top-Running Double Girder Crane



Capacity (ton)	Span (m)	Lift L (mm)	Speed(m/min) / Motor(kW)			Dimension (mm)							Travelling Wheel (mm φ)	Runway Rail (kg/m)	
			Hoisting	Traversing	Travelling	H	A	B	C	E	F	R			
3	11	12	9/5.5 or 4.5/2.8	24/0.75 or 16/0.5	24/0.75x2 or 16/0.5x2	415	2440	2000	250	1200	60	950	160	15	
	15						3000	2500					200		
	18						3550	3000					250		
	21						4050	3500							
	24						4550	4000							
5	27		5.6/5.5 or 4.2/4.2	24/0.75 or 16/0.5	30/1.5x2 or 20/1.0x2	510	5050	4500	1700	100	1150	250	22		
	15						3050	2500							
	18						3550	3000							
	21						4050	3500							
	24						4600	4000							
10	27	4.5/9 or 3/6	15/0.75 or 10/0.5	30/2.2x2 or 20/1.5x2	775	5100	4500	350	1900	60	1150	315	30		
	30					5850	5000					400		400	
	15					3100	2500					400	2300	100	1200
	18					3600	3000								
	21					4350	3500								
24	4850	4000													
27	5350	4500													
15	30	4.5/13 or 3/8.5	15/1.5 or 10/1.0	30/2.2x2 or 20/1.5x2	995	5850	5000	400	2300	100	1200	400	30		
	15					3150	2800								
	18					3850	3000								
	21					4350	3500								
	24					4850	4000								
20	27	4.2/17 or 2.8/11.5	15/1.5 or 10/1.0	30/3.7x2 or 20/2.2x2	1175	5450	4500	350	2000	2300	2300	500	37		
	30					6000	5000								
	15					3850	3000					400	2300	100	1800
	21					4450	3500								
	24					4950	4000								
27	5500	4500													
30	6000	5000													
30	95	2.8/17 or 1.8/11.5	15/1.5x2 or 10/1.0x2	30/2.2x2 or 20/1.5x2	1480	4450	3500	400	2600	2300	1800	500			
	15					5000	4000								
	27					5500	4500								
	30					6000	5000								