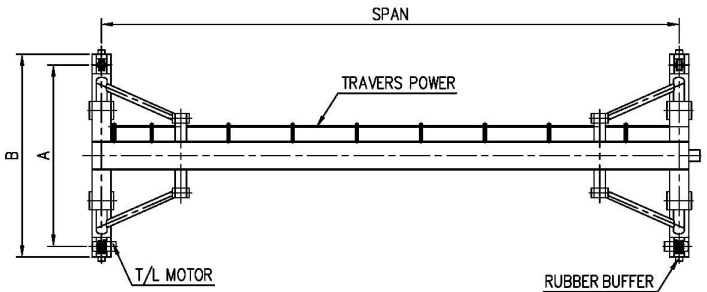
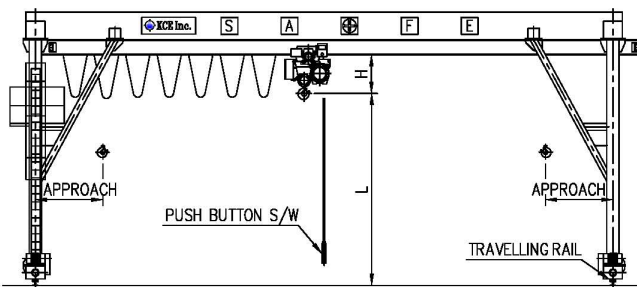


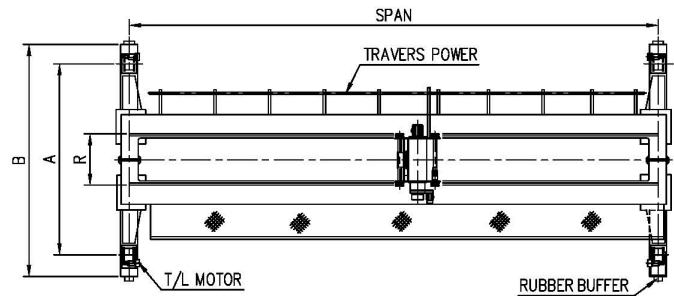
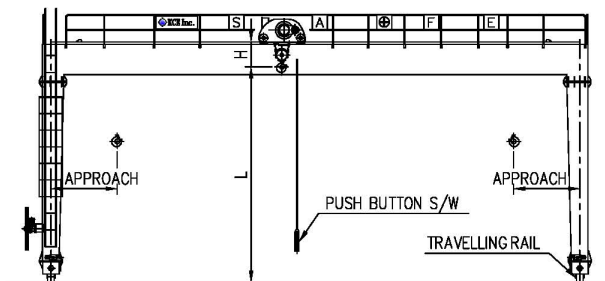
Single Girder Gantry Crane



06

Capacity (ton)	Span (m)	Lift L (mm)	Speed(m/min) / Motor(kW)			Dimension (mm)			Travelling Wheel (mm φ)	Runway Rail (kg/m)		
			Hoisting	Traversing	Travelling	H	A	B				
1	7.5	6 or 12	12/1.2 or 6/0.6	24/0.4 or 16/0.2	24/0.75x2 or 16/0.5x2	815	3500 ~ 5000	4000 ~ 5500	200	15 22		
	9											
	12											
	15											
	18											
2	7.5		10/3.7 or 5/1.8	24/0.75 or 16/0.5		24/0.75x2 or 16/0.5x2	980	3500 ~ 5050			4050 ~ 5600	250
	9											
	12											
	15											
	18											
3	7.5	9/5.5 or 4.5/2.8	24/0.75 or 16/0.5	24/0.75x2 or 16/0.5x2	1115	3500 ~ 5000	4000 ~ 5500	200				
	9											
	12											
	15											
5	9	5.6/5.5 or 4.2/4.2	30/1.5x2 or 20/1.0x2	30/1.5x2 or 20/1.0x2	1325	3500 ~ 5050	4050 ~ 5600	250				
	12											
	15											
10	9	4.5/9 or 3/6	15/0.75x2 or 10/0.5x2	15/0.75x2 or 10/0.5x2	1565	4000 ~ 5000	4600 ~ 5600	315				
	12											
	15											

Double Girder Gantry Crane



Capacity (ton)	Span (S) (m)	Lift L (mm)	Speed(m/min) / Motor(kW)			Dimension (mm)				Travelling Wheel (mm φ)	Runway Rail (kg/m)	
			Hoisting	Traversing	Travelling	H	R	A	B			
3	15	12	9/5.5 or 4.5/2.8	24/0.75 or 16/0.5	30/1.5x2 or 20/1.0x2	415	950	4000 ~ 5000	4550 ~ 5550	250	22 30	
	17.5											
	20											
5	10		5.6/5.5 or 4.2/4.2	15/0.75 or 10/0.5	30/2.2x2 or 20/1.5x2	510	1150	4000 ~ 5000	4600 ~ 5600	315		400
	12.5											
	15											
10	17.5		4.5/9 or 3/6	15/1.5 or 10/1.0	30/3.7x2 or 20/2.2x2	775	1150	4000 ~ 5000	4850 ~ 5850	400		500 630
	20											
	15											
15	10		4.5/13 or 3/8.5	15/1.5 or 10/1.0	30/3.7x2 or 20/2.2x2	995	1200	4000 ~ 6000	4950 ~ 6950	500 630		30 37
	12.5											
	15											
20	20	4.2/17 or 2.8/11.5	15/1.5x2 or 10/1.0x2	30/3.7x2 or 20/2.2x2	1175	1300	4000 ~ 6000	500 ~ 7000	630 710 800	30 37		
	15											
	20											
30	10	2.8/17 or 1.8/11.5	15/1.5x2 or 10/1.0x2	30/3.7x2 or 20/2.2x2	1480	1800	4000 ~ 6000	5200 ~ 7200	500x8 630x8	30 37		
	12.5											
	15											
50	20	3.2/33	15/2.2x2 or 10/1.5x2	30/3.7x4 or 20/2.2x4	1680	2300	6000 ~ 7000	7000 ~ 8000	500x8 630x8	50		
	25											
	30											
	30											